



MONTHLY MEMBERSHIP PROGRESS REPORT

District 201W2

Results as of: 02/28/2019

GMT: ANN ELDRIDGE

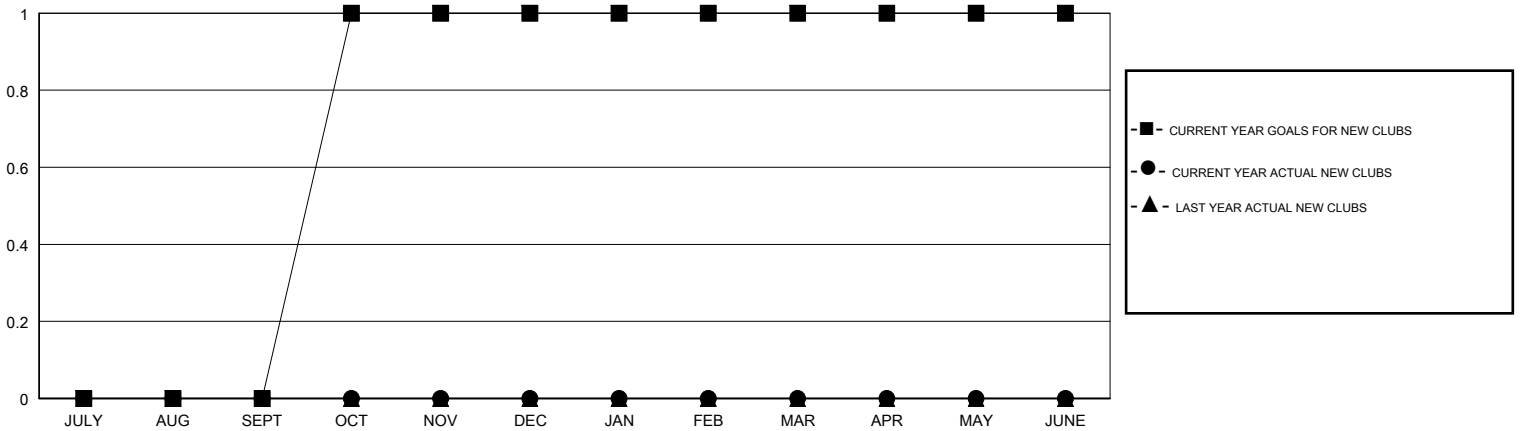
LOCATION AUSTRALIA

GMT CA

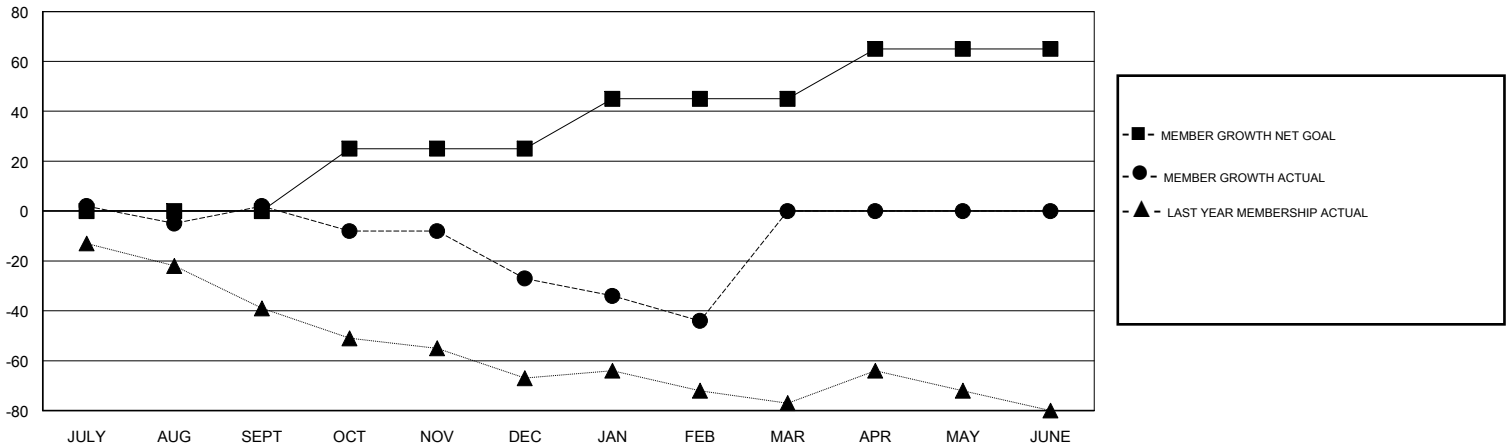
Clubs			
RESULTS FOR 2018-2019			
QUARTER	NEW CLUB GOAL	NEW CLUBS	DROPPED CLUBS
JULY/AUG/SEPT	0	0	0
OCT/NOV/DEC	1	0	0
JAN/FEB/MAR	0	0	0
APR/MAY/JUNE	0	0	0

Members			
RESULTS FOR 2018-2019			
QUARTER	MEMBER GROWTH NET GOAL	MEMBER GROWTH ACTUAL	DROPPED MEMBERS ACTUAL (including transfers)
JULY/AUG/SEPT	0	34	28
OCT/NOV/DEC	25	32	52
JAN/FEB/MAR	20	19	32
APR/MAY/JUNE	20	0	0

GOALS AND ACTUAL NEW CLUBS CUMULATIVE



GOALS AND ACTUAL MEMBERS CUMULATIVE



DROPPED CLUBS: 0

33 CLUBS OF 62 ADDED 1 OR MORE NEW MEMBERS

GENDER DISTRIBUTION	
MALE	917 (67.43%)
FEMALE	443 (32.57%)
Women Percentage Fiscal Year Goal: 38%	

DROPPED MEMBERS	
DECEASED	5
CLUB CANCELLED	0
OTHER	107
TOTAL	112

[CLICK HERE FOR CUMULATIVE MEMBERSHIP DATA](#)

TOTAL FAMILY UNIT MEMBERS	251
FAMILY MEMBERS PAYING HALF DUES	126